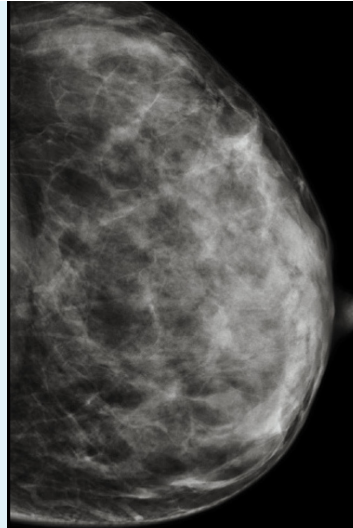


# CONTRAST-ENHANCED MAMMOGRAPHY

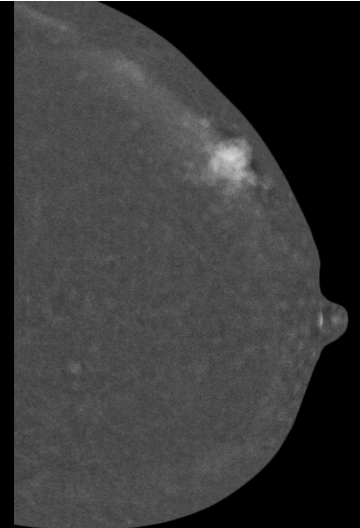
Contrast-enhanced mammography (CEM) is a breast imaging technique combining digital mammography with an intravenous contrast agent to improve the visualisation of breast tissue.

A CEM highlights areas of abnormal blood flow that can occur when cancers develop.

CEM offers a significant advancement in breast imaging technology, providing improved diagnostic confidence, specificity and sensitivity.



Standard Mammogram



Contrast Enhanced Mammogram

*Image courtesy of Dr Alcantara-Souza, Hospital del Mar, Barcelona (Spain)*

## Benefits



Contrast-enhanced mammography **increases the detection of breast cancer** by identifying and characterising lesions that may not be visible on a standard mammogram.



CEM can improve diagnostic accuracy for patients with dense breast tissue by **reducing the masking effect of fibroglandular tissue**. This may result in an earlier diagnosis and improved clinical outcomes for patients.



Clinical application of CEM ranges from screening and diagnostic evaluation, pre-operative planning and assessment of treatment response to **guide ongoing management decisions**.



CEM can provide a **viable breast imaging alternative for patients who present with contraindications** for MRI.



The comprehensive information obtained through CEM often **reduces the need for additional imaging modalities**, streamlining the diagnostic process and minimising patient anxiety.



# DIAGNOSTIC BREAST IMAGING

## When to consider CEM?

### Patients with dense breast tissue

Around 40% of women in their 50s and more than half of women under 50 have dense breasts<sup>1</sup>, which can make cancers harder to detect on standard mammograms.

CEM is not significantly affected by breast density, which may result in an earlier diagnosis and improved clinical outcomes for patients.

### Patients with increased risk factors for breast cancer

Women with a family history of breast cancer, genetic predisposition, or other risk factors may benefit from CEM to ensure early and accurate detection.

### Patients with symptoms and those requiring diagnostic clarification

When a woman presents with a breast symptom, diagnostic imaging is required rather than screening (2D mammography). CEM provides additional clarity where standard imaging may be unclear.

### To support the management of breast cancer

CEM plays an important role in pre-operative planning, guiding surgical decisions, and monitoring response to treatment over time. CEM can improve surveillance after breast conservation treatment and for the contralateral breast.

<sup>1</sup> <https://www.health.gov.au/resources/publications/breastscreen-australia-position-statement-on-breast-density-and-screening>

## Available at

### BRISBANE

Bayside  
Greenslopes Private Hospital  
Mater Hospital Brisbane  
Mater Private Hospital Springfield  
Mater Women's Imaging Centre  
St Vincent's Private Hospital Brisbane  
Sunnybank Women's Imaging Centre  
Taringa

### GOLD COAST

Gold Coast Private Hospital

### MACKAY

Mater Private Hospital Mackay

### TOWNSVILLE

Mater Private Hospital Pimlico

### TOOWOOMBA

St Vincent's Private Hospital Toowoomba  
St Andrew's Hospital Toowoomba

### CAIRNS

189 Lake Street



For detailed information on locations and billing, please scan the QR code or visit [qldxray.com.au/billing-guide](https://qldxray.com.au/billing-guide)

For fast and direct access to Queensland X-Ray, please contact our Referrer Help Desk on **1800 77 99 77**