

Further information:

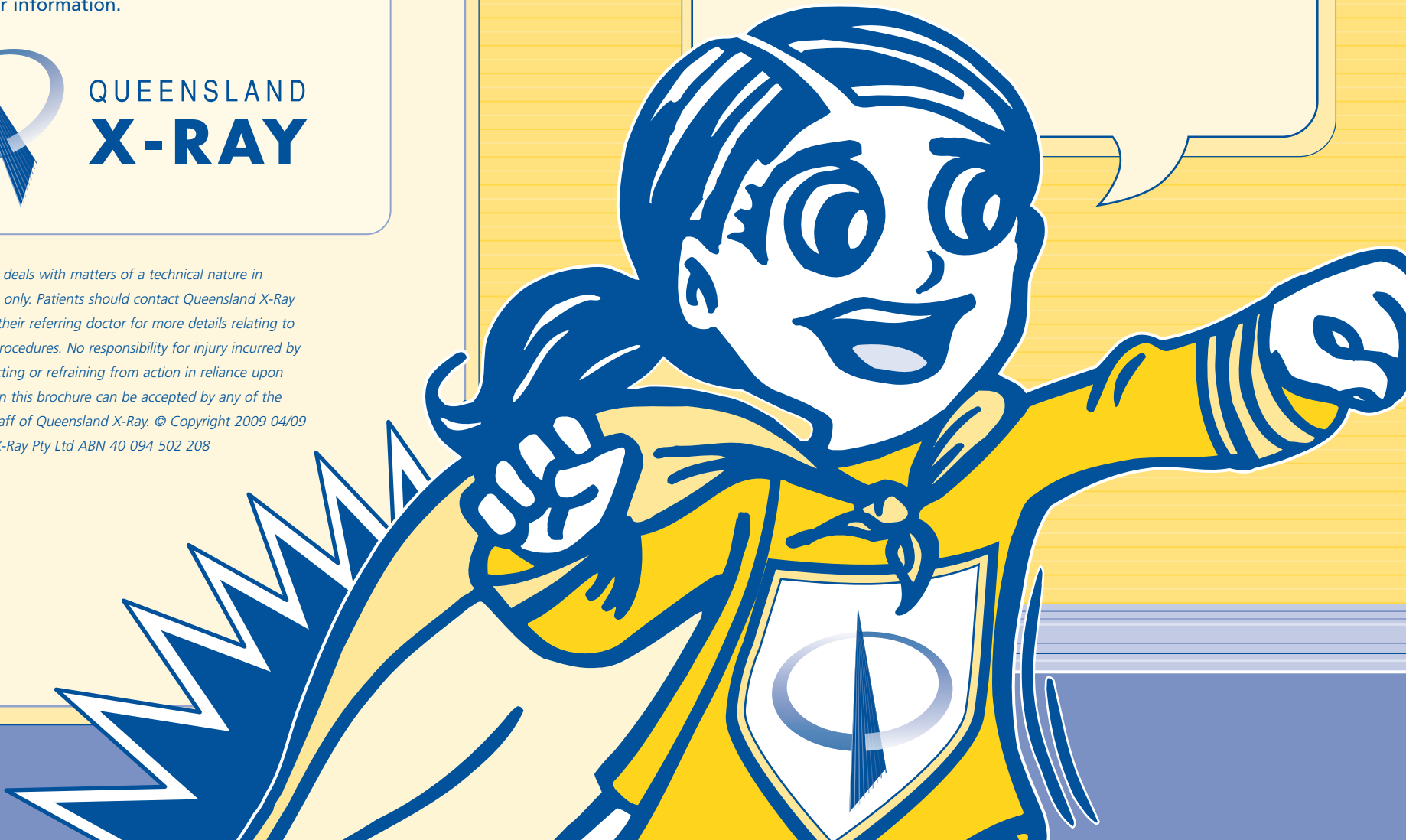
Please contact your nearest Queensland X-Ray practice or visit our website at www.qldxray.com.au for further information.



QUEENSLAND
X-RAY

This brochure deals with matters of a technical nature in general terms only. Patients should contact Queensland X-Ray personnel or their referring doctor for more details relating to preparation procedures. No responsibility for injury incurred by any person acting or refraining from action in reliance upon any material in this brochure can be accepted by any of the partners or staff of Queensland X-Ray. © Copyright 2009 04/09 Queensland X-Ray Pty Ltd ABN 40 094 502 208

*Hello, my name is Sonic!
I'm going to tell you
about having a*
CT SCAN



What is a CT scan?

CT stands for Computed Tomography. A CT Scanner is a machine that takes pictures of the inside of your body.

On the day...

You may need to get ready for your CT Scan before you come to see us. Ask your parent or carer to tell you what you need to do.

After you arrive for your visit you will be asked to change from your clothes into one of our gowns. You will then be taken into the CT room.

Someone will help you onto the table that you need to lie on. All you need to do is rest and lie as still as possible. The doctor's helper will be in the room next door to you. You will be able to hear and talk to him or her if you wish.

The table that you lie on will move through the doughnut-shaped machine. During this time, it will take pictures of your body. You may need to hold your breath for a few seconds.

You may need an injection to show the doctor certain parts of the inside of your body.

The test will take between 5 to 10 minutes.

Once your pictures have been taken you will be able to change back into your clothes. The pictures and a report will be given to you to take to your doctor.



A note to parents and carers

We suggest that you read this brochure with your child before coming to see us. Most children accept the examination more readily if they know what to expect on the day.

We find that many children feel more at ease if they are able to bring their favourite toy or blanket with them for comfort.

It is very rare, however, should your child require an intravenous injection, please be aware that there is a small chance of an allergic reaction to the contrast "dye". We only use modern non-ionic contrast, which rarely causes any significant reactions. We have fully qualified staff at the practice to assist if this does occur.

Please tell the staff if your child has had any form of reaction to X-ray contrast before or if they are asthmatic.

Please follow the preparation information below. Please bring with you any previous X-rays, Ultrasounds, MRIs or CT Scans that your child may have.

If you, or your child, has any concerns regarding the procedure, please discuss them with the Radiographer (a Technologist trained in medical imaging) who performs the scan or the Radiologist (a doctor who specialises in medical imaging).

If your child suffers from claustrophobia he/she may need sedation for the test. Please inform the Receptionist of this when you book the appointment.

Patient Preparation Guidelines:

CT of the Abdomen/Pelvis - Drink clear fluids for 4 hours prior to examination, including 500mls in the hour before appointment time, unless advised otherwise. At time of making your appointment, please check with the Receptionist, as the amount may vary depending on the child's age.

Preparation is not required for other CT procedures.