

Radiology Update

CT upgrade enhances imaging service at Browns Plains practice

Queensland X-Ray's practice on Grand Plaza Drive at Browns Plains has recently installed a new GE 16-slice Brightspeed CT scanner.

This equipment upgrade represents a significant enhancement to the imaging service and will benefit both patients and referring clinicians.

Key advantages:

- **Thin acquisition slices**

The newly installed 16-slice scanner acquires images in 0.625mm slices. The thin slices enables improved diagnostic capabilities including the detection of small lesions and therefore early diagnosis and more accurate characterisation of disease.

The increased ability of the multi-slice scanner to diagnose a broader range of conditions potentially reduces the need for other invasive procedures. The scanner's high-resolution images are ideal for general imaging and for more sophisticated techniques such as CT angiography and 3D reconstructions.

- **Shorter scan times**

The advantages of shorter scan times include:

- Improved patient convenience
- Shorter 'breath-hold' requirements for particular scans. In some instances, the need for patients to hold their breath during a procedure has been completely eliminated
- Reduction in movement artefact for trauma patients, children and the elderly.
- Multi planar reconstructions

One scan can produce axial, sagittal, coronal and 3D images for enhanced diagnostic accuracy.

Opening hours:

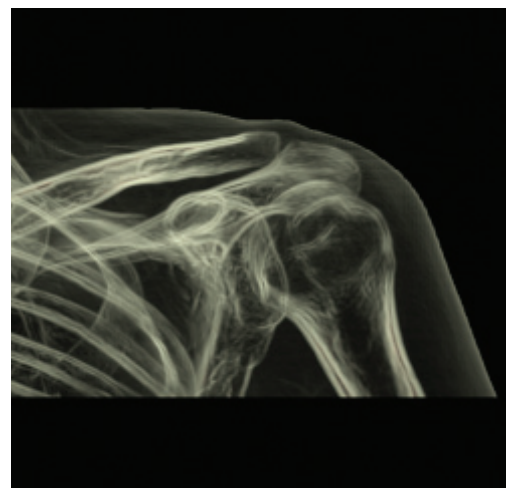
8.30 am to 5.00 pm, Monday to Friday

8.30 am to 12 noon, Saturday.

For further information please contact the practice on (07) 3802 6805 or visit our website at www.qldxray.com.au.



3D Carotid Angio



3D Transparent Bone

- **Lower patient dose**

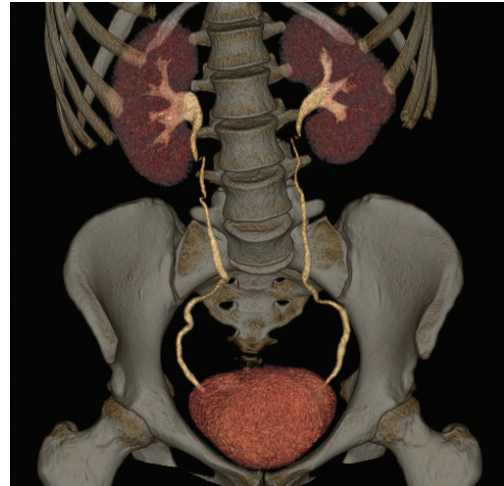
Patients also experience a lower radiation dose using 3D dose modulation, which is automatically adjusted by the scanner.

- **Dental scanning now possible**

In addition, the CT equipment upgrade will now allow dental studies to be carried out at the practice. Queensland X-Ray offers a comprehensive and customised dental service provided by the only specialist dental radiologist reporting south of the Brisbane river, Dr Raahib Dudhia.

Using low dose protocols developed specifically for dental imaging, the CT service includes Dentascan reformatting with life-sized printed images for pre-implant planning, surgical guide scans, imaging of third molars and other impacted teeth, TM Joint CT and assessment pathology.

If you would like more information about the Dental services available please contact Dr. Raahib Dudhia on (07) 3840 6200.



Bone Coronal MPR

The following procedures are also available at Queensland X-Ray's Browns Plains practice :

- Plain x-rays
- Screening studies (IVP and Barium studies)
- CT scans
- Ultrasound
- Bone Density



Dr Gregory Slater MBBS, FRANZCR
Managing Radiologist, Browns Plains

Clinical Experience:

Radiology Registrar and Visiting Radiologist at Princess Alexandra Hospital. Clinical Fellowship in Abdominal Imaging and Interventional Radiology at Harvard Medical School and Massachusetts General Hospital, Boston (USA). Joined Queensland X-Ray in 1995.

Areas of special interest:

Interventional radiology and abdominal imaging.

Queensland X-Ray provides Radiology Updates for educational purposes and to keep our referrers/patients informed of changes in our practice locations, hours of business, etc. Queensland X-Ray will not use personal information such as your name and address for any other reason without obtaining your consent. If you do not wish to receive such updates please notify the Queensland X-Ray Communications Officer on (07) 3422 8800.

© Queensland X-Ray Pty Ltd 2009.

All rights reserved. Not to be reproduced in whole or in part without the permission of the copyright owner A.B.N 40 094 502 208 08/09.